

author: Gerrit van Dalflen  
tel.: +31 10 458 4816  
email: gerrit@tijdteam.nl  
web: www. tijdteam.nl

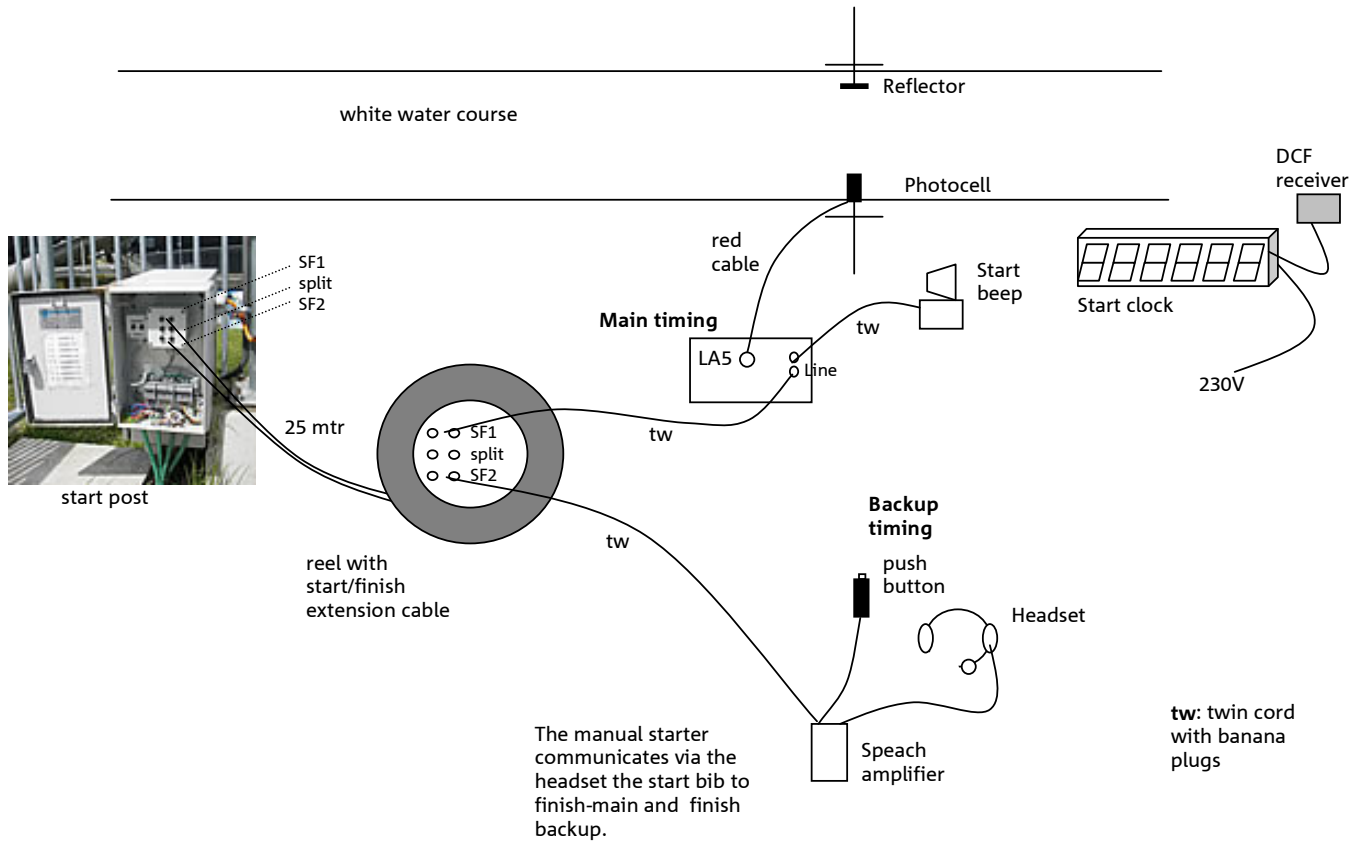
Date	Version	Change
16Apr2007	0.1	First draft
11Sep2007	0.2	update
29Okt2007	0.3	Opmerkingen wedstrijd okt2007 verwerkt
28Feb2008	0.4	Aanpassing Timy kabels verwerkt
15Sep2008	0.5	Timing and Penalty monitoring via C123 Terminal
23Nov2009	0.6	Results publishing in Race Office

## DWD Timing system -

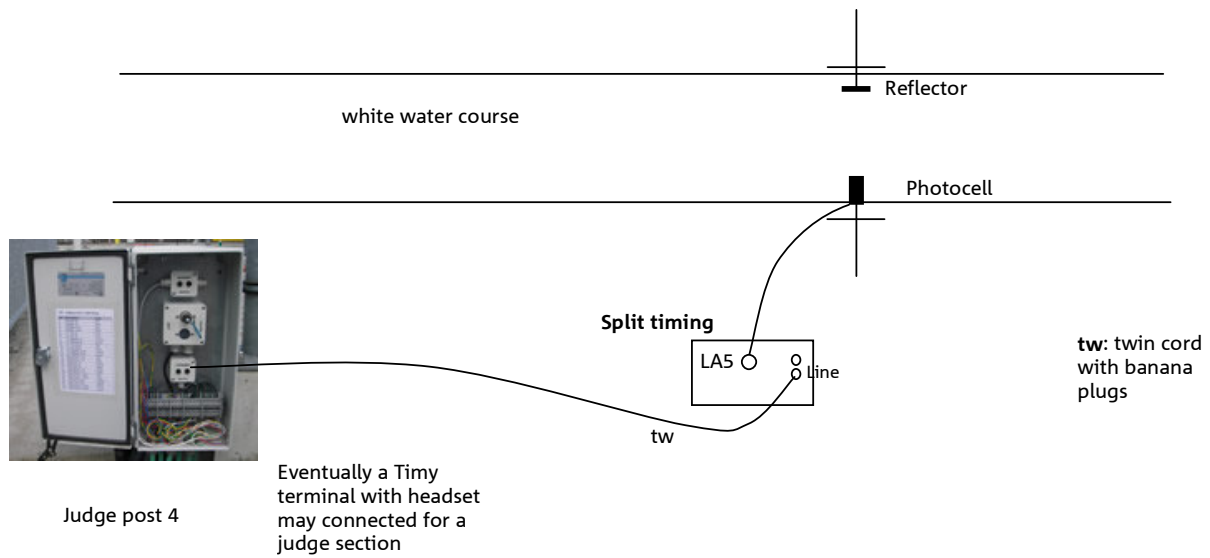
### Installation of Start, Finish, Backup and Judge terminals

DWD Timing system - .....	1
Installation of Start, Finish, Backup and Judge terminals .....	1
1. Start .....	2
2. Split timing - Tussentijd .....	3
3. Finish .....	4
4. Timing Office PC configuration .....	5
5. Penalty collection at timing office (finish location) .....	5
6. Race office results publication .....	6
7. Judge post .....	6
8. Configuration Timy terminal chain .....	7

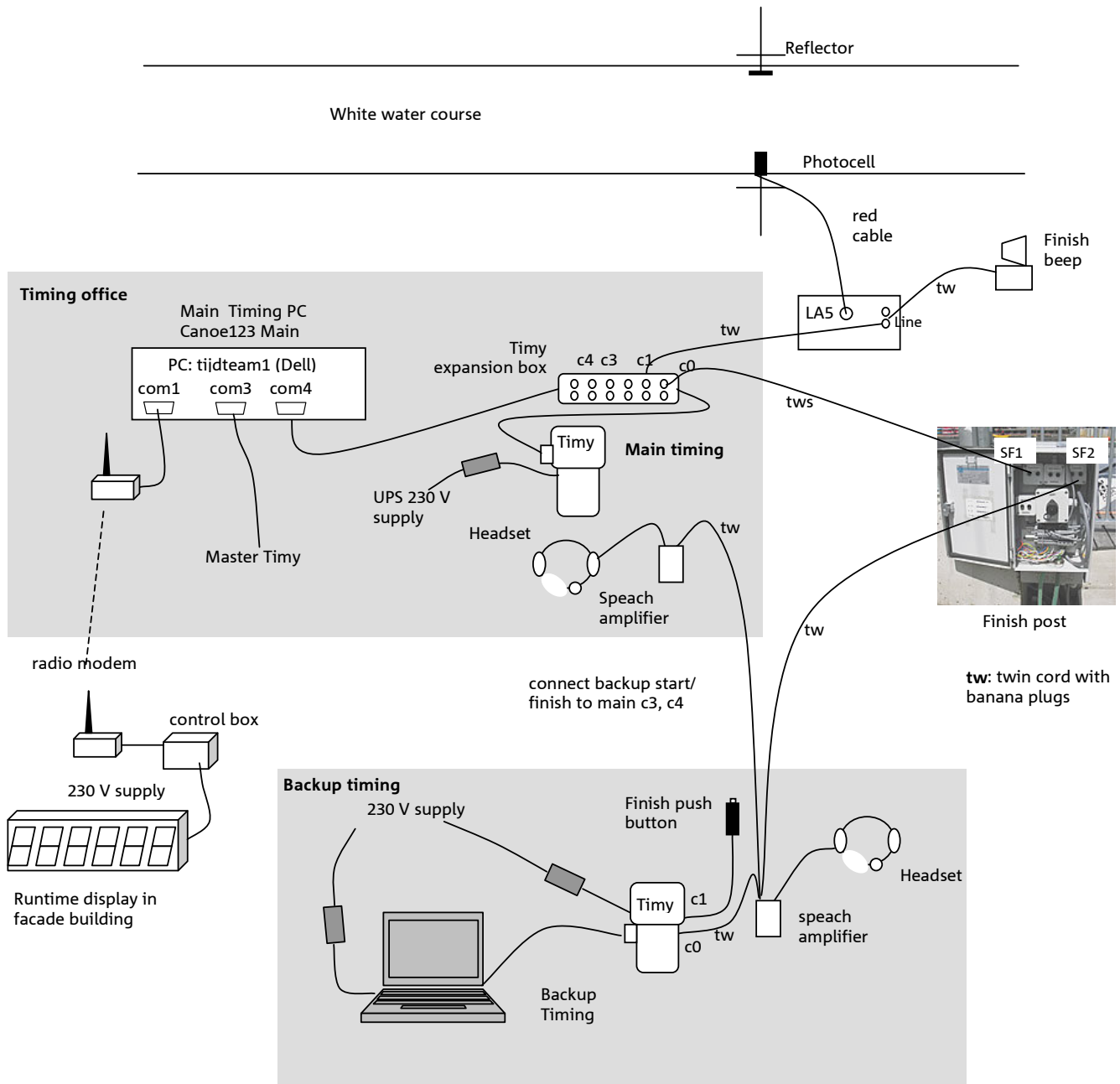
## 1. Start



## 2. Split timing - Tussentijd



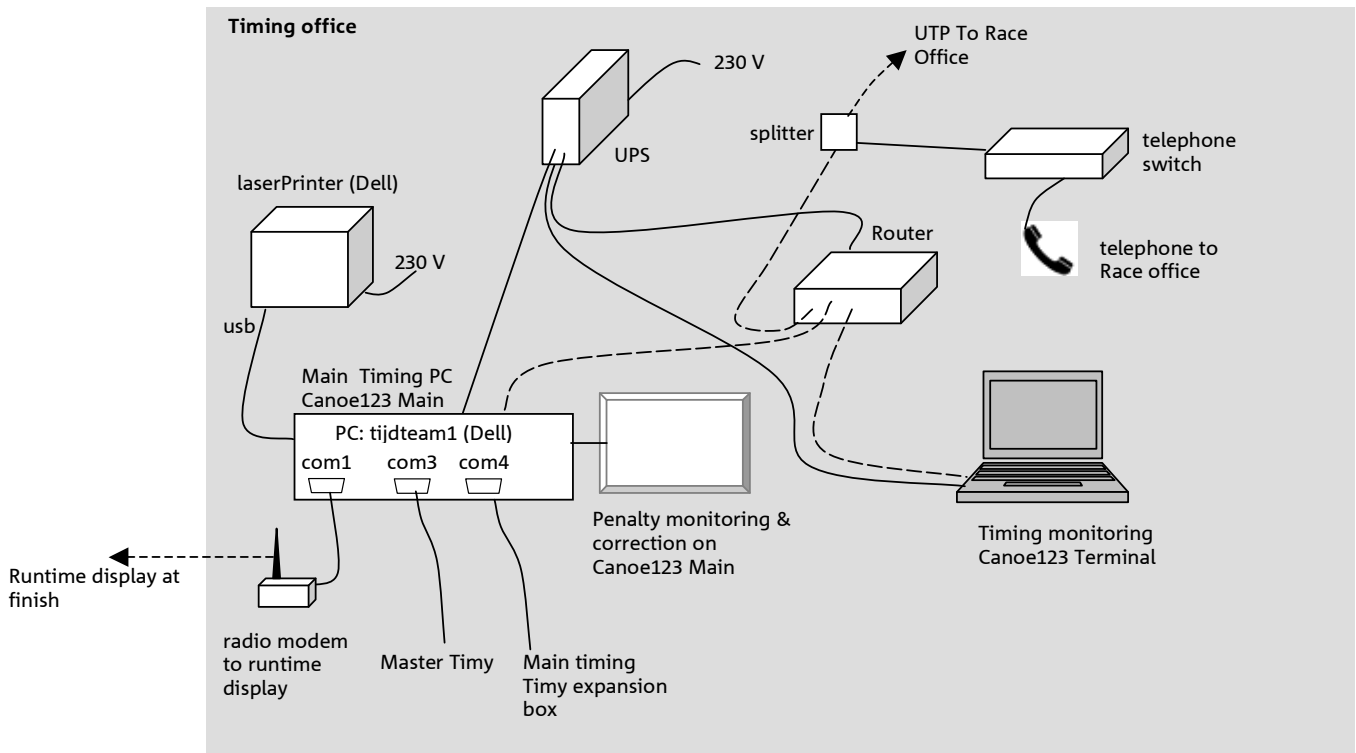
## 3. Finish



Manual backup timing events are shown on Main Timing PC (no impulse filtering)

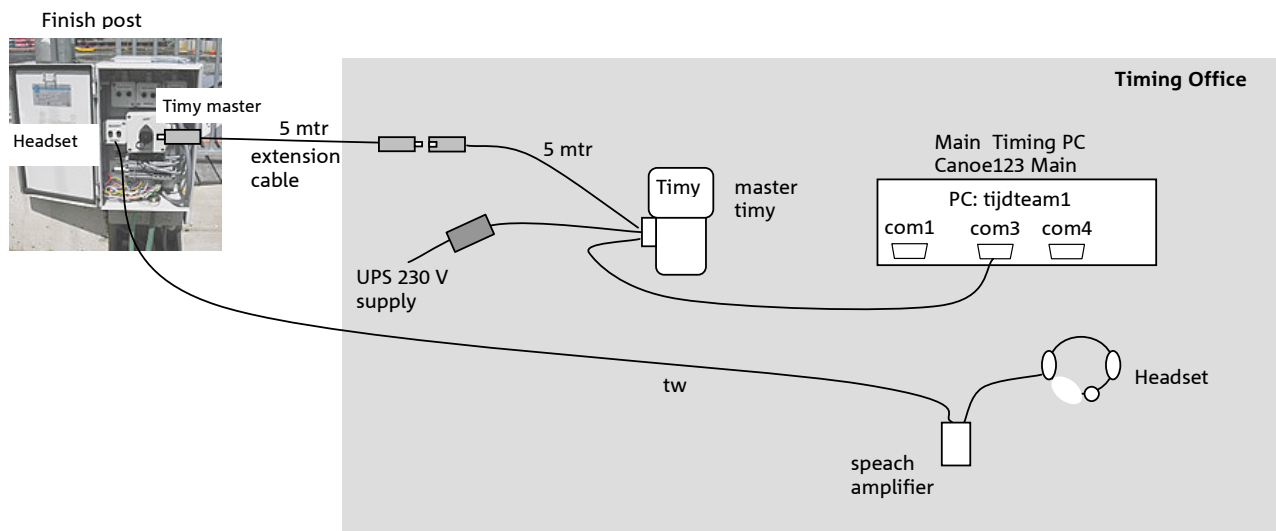
event	MainTimy channel	connect to
Start Main	C0	Start beam
Finish Main	C1	Finish beam
Start Backup	C3	connect to C0 backup Timy
Finish Backup	C4	connect to C1 backup Timy

4. Timing Office PC configuration

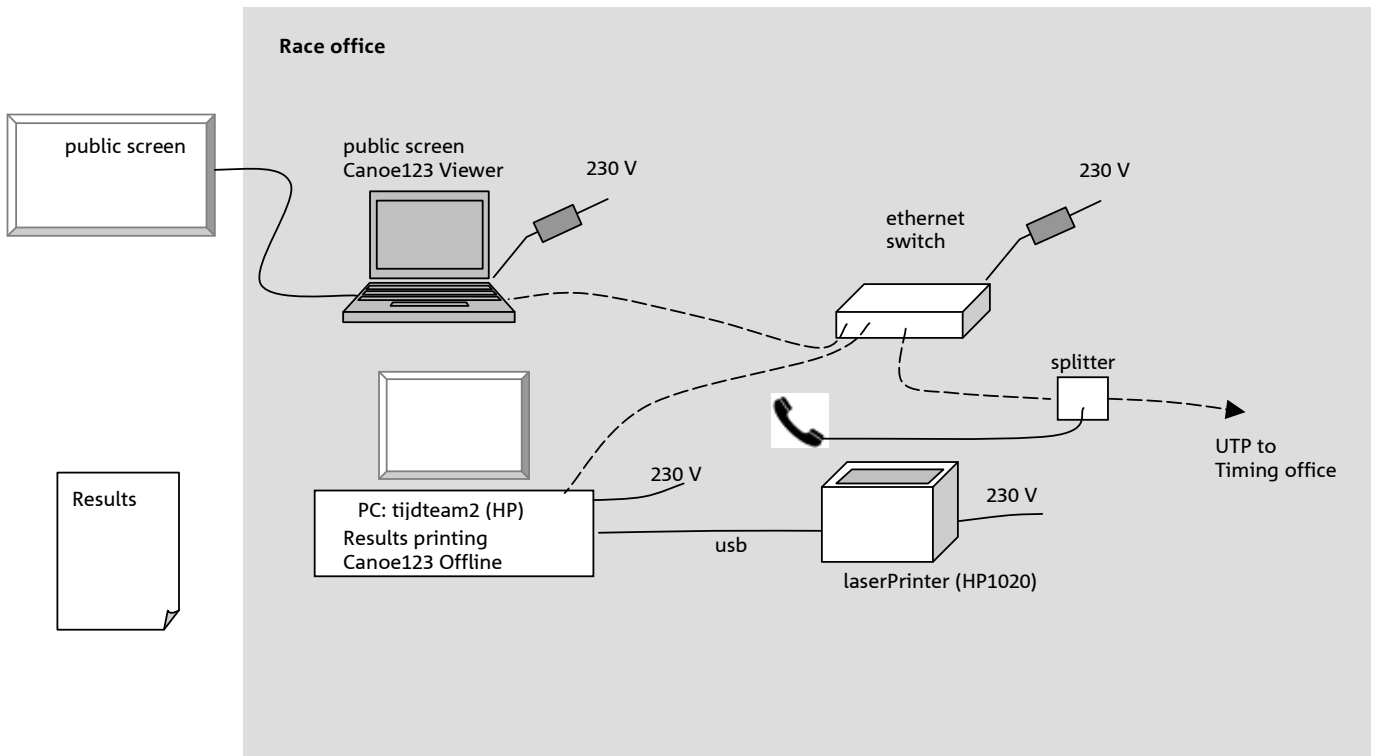


PC: tijdteam1

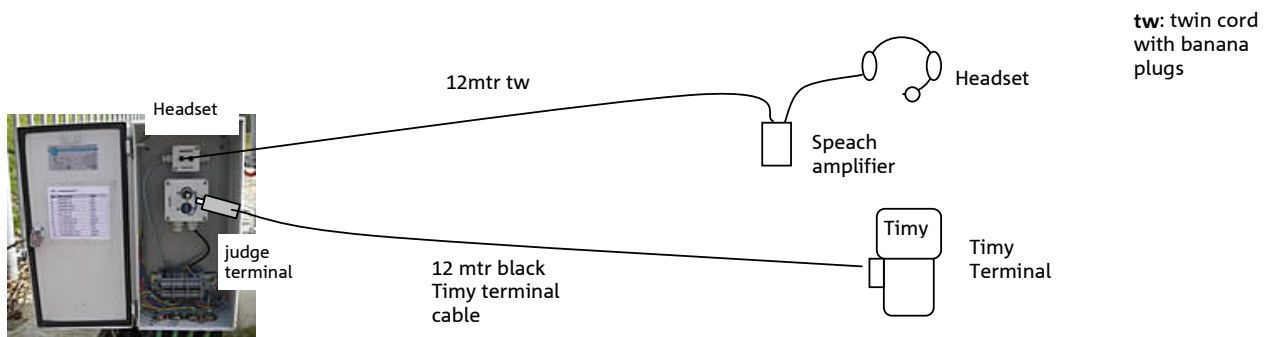
5. Penalty collection at timing office (finish location)



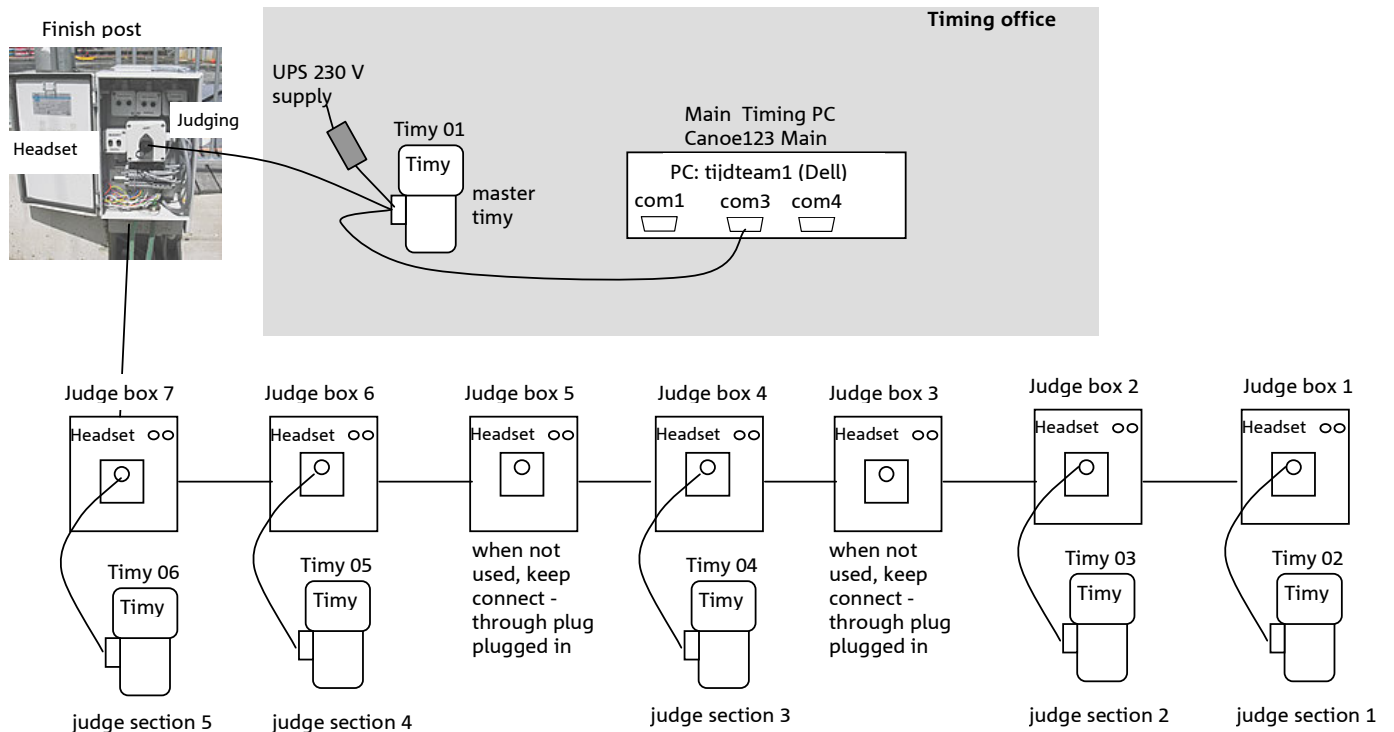
6. Race office results publication



7. Judge post



## 8. Configuration Timy terminal chain



The Terminal (slave) Timy's have no battery. They get the power supply via the cable, via the master Timy. The power supply of the master Timy comes from the UPS.

### Settings Timy:

- Check that the active program on the Timy's is set to Terminal.

### **Timy chain setup**

1. Connect the Timy cables to the required Judge boxes, **without** connecting the Timy's
2. Connect the Master Timy to the finish post, and apply the power supply. It is not necessary to connect the Master Timy already to the Main Timing PC
3. Connect the Timy at judge section 1. The Timy will get address 02
4. Connect the Timy at judge section 2. The Timy will get address 03
5. Connect the Timy at judge section 3. The Timy will get address 04
6. Connect the Timy at judge section 4. The Timy will get address 05
7. Connect the Timy at judge section 5. The Timy will get address 06
8. Now connect the Master Timy to the Main Timing PC and initialize the Timy chain in Canoe123.  
Check that Canoe123 is set as follows:  
serial port: baud=9600, databits=8, stopbit=1, parity=no, handshaking=no  
MasterOnBottom = false  
DedicatedMaster = true
9. Check that the gate number on the Timy Terminals are correct per judge section.

**If you need to repeat the chain setup procedure:**

1. Remove the power supply on the D25 connector of the Master Timy.
2. All slave Timy's will close down (as they have no battery)
3. Switch the master Timy off.
4. Reconnect the power supply to the master Timy D25 connector. The initialization will start again

The master then starts a enumeration procedure. In this procedure it is important to assign the Timy addresses in the right order.

All Timy's get the message: ARE YOU NR 6 ? Press the green OK-button of the Timy at Judge section 5  
The Timy responds with **Timy addr:06**

All Timy's get the message: ARE YOU NR 5 ? Press the green OK-button of the Timy at Judge section 4  
The Timy responds with **Timy addr:05**

All Timy's get the message: ARE YOU NR 4 ? Press the green OK-button of the Timy at Judge section 3  
The Timy responds with **Timy addr:04**

All Timy's get the message: ARE YOU NR 3 ? Press the green OK-button of the Timy at Judge section 2  
The Timy responds with **Timy addr:03**

All Timy's get the message: ARE YOU NR 2 ? Press the green OK-button of the Timy at Judge section 1  
The Timy responds with **Timy addr:02**

All Timy's get the message: ARE YOU NR 1 ? Press the green OK-button of the master Timy  
The Timy responds with **Timy addr:01**

At the end of the procedure the master shows : ALL TIMYS OK

**NB.** Do not try to let the Timy numbers correspond with the judge section numbers. Canoe123 requires that the Timy master has number 1.

**Beware:** After pressing the green button, the Timy normally responds with a confirmation, showing the Timy number. However, sometimes the Timy does not respond with a confirmation. Do not press the button again, as the Timy will then receive the next number, and you have to do the initialization again.

**Remark:** When the Timy -chain is ok, you can restart Canoe123 without the need to re-initialize the Timy chain.